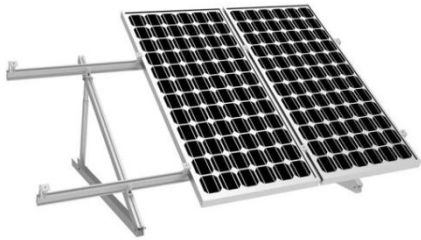


# Adjustable Triangle series Rooftop Solar Panel Mounting



## Introduction

- Product Material : 6005-T5 Aluminum alloy ( Anodized with thickness>10um )
- Fastener Material: Stainless steel ( SS304 )



## Features:

- Adjustable Triangle Solar Mounting is the perfect solution when structural stability is critical in the harshest environments, whether on flat roofs or on the ground.
- The system is extremely strong and durable, but is quick and easy to install. It allows solar panels to be installed safely and quickly adjusted within the angle ranges 10 to 15 degrees, 15 to 30 degrees and 30 to 60 degrees.

Item	Specification
Install Site	Pitched Roof/ Plat Roof
Tilt Angel	Flushed with the roof, up to 60deg
Buiding Height	Up to 20m
Max Wind Speed	Up to 60m/s
Snow Load	Up to 1.4KN/m2
Material	Anodized aluminum alloy & Stainless Steel
Standards	AS/NZS 1170 & DIN 1055 & UL

